

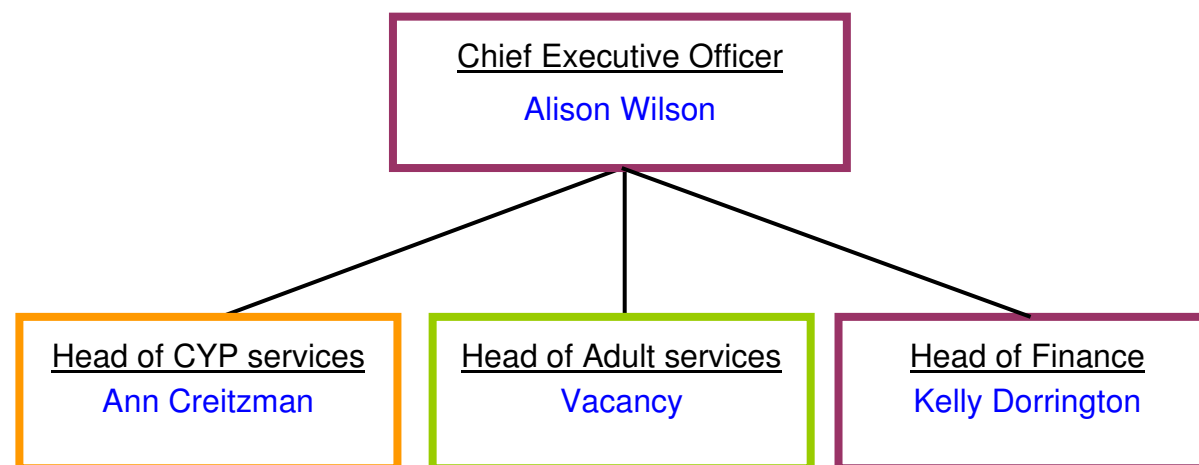
Mind in West Essex - Organogram

Board of Trustees

Board of Trustees

Chairman - [Richard Crone](#)
Vice Chair - [Robin Strube](#)
Trustee - [Alan Wellbelove](#)
Trustee - [Anja De Vos](#)
Trustee - [Barbara Brafman-Price](#)
Trustee - [Gary Hyams](#)
Trustee - [Jackie Anslow](#)
Trustee - [Sylvia Hayes](#)
Trustee -
Trustee -

Management team



Service Key

- Cross service staff
- Community Services
- Counselling
- MHST in schools
- Crisis Alternatives
- Training
- Other services

<u>Staff</u>	<u>Non Staff professionals</u>	<u>Volunteers</u>	<u>Counselling</u>
87 staff deliver the Associations services	Data support - Mark Prangell Auditors & Financial support - Edmund Carr	125 volunteers work in a variety of roles to support our activities.	30 qualified, self-employed Counsellors deliver the service.

Line management structure

